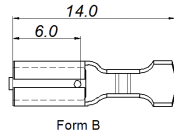
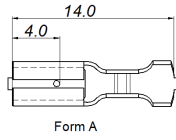




Düz Tip Diři Terminaller

Receptacles

Düz Tip Dişi Terminaller / *Receptacles*



2.8 mm

| Ürün Adı Product Name | Ürün Kodu Product Code | Malzeme Kalınlığı (mm) Material Thickness (mm) | Kablo Kesiti (mm ²) Wire Size (mm ²) | Form | X | TAB | Malzeme / Material | | | Adet / SPQ | |
|--------------------------|---------------------------|---|---|------|------|------|--------------------|------|----|--------------|---------------|
| | | | | | | | CuZn | CuSn | DC | Rulo / Chain | Dökme / Loose |
| SF1/2D (A) (2.8) | 0XXXX04001 | 0,30 | 0,50-1,00 | A | 0,40 | 0,50 | ● | ● | ● | 15.000 | 20.000 |
| SF1/2D (B) (2.8) | 0XXXX04002 | 0,30 | 0,50-1,00 | A | 0,70 | 0,80 | ● | ● | ● | 15.000 | 20.000 |
| SF1/2D-V (A) (2.8) | 0XXXX04079 | 0,30 | 0,50-1,00 | B | 0,40 | 0,50 | ● | ● | ● | 15.000 | 20.000 |
| SF1/2D-V (B) (2.8) | 0XXXX04143 | 0,30 | 0,50-1,00 | B | 0,70 | 0,80 | ● | ● | ● | 15.000 | 20.000 |
| SF1/2DB (A) (2.8) | 0XXXX04189 | 0,30 | 0,50-1,50 | A | 0,40 | 0,50 | ● | ● | ● | 15.000 | 20.000 |
| SF1/2DB (B) (2.8) | 0XXXX04150 | 0,30 | 0,50-1,50 | A | 0,70 | 0,80 | ● | ● | ● | 15.000 | 20.000 |

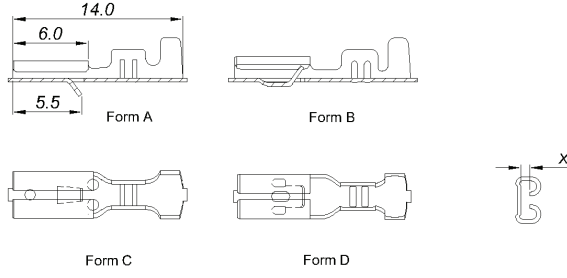
| Kullanıldığı Konnektörler / Used with insulation housing | Sayfa / Page |
|---|-------------------|
| 2.8 R Tipi Konnektör / 2.8 R Type Housing | 0XXXX41008-0 13-5 |
| 2.8 R2 Tipi Kısa Konnektör / 2.8 R2 Type Short Housing | 0XXXX41041-0 13-5 |

| Kaplama / Plating | | |
|-------------------|----|----|
| Sn | Ni | Ag |
| ✓ | ✓ | ✓ |

● Standart Ürün / Standard Part

* Talep Üzerine / Available on request

Düz Tip Dişi Terminaller / *Receptacles*



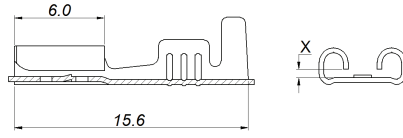
2.8 mm

| Ürün Adı <i>Product Name</i> | Ürün Kodu <i>Product Code</i> | Malzeme Kalınlığı (mm) <i>Material Thickness (mm)</i> | Kablo Kesiti (mm ²) <i>Wire Size (mm²)</i> | Form | X | TAB | Malzeme / <i>Material</i> | | | Adet / <i>SPQ</i> | |
|---------------------------------|----------------------------------|--|--|------|------|------|---------------------------|------|----|---------------------|----------------------|
| | | | | | | | CuZn | CuSn | DC | Rulo / <i>Chain</i> | Dökme / <i>Loose</i> |
| SF1/2DT (A) (2.8) | 0XXXX04004 | 0,30 | 0,50-1,00 | A | 0,40 | 0,50 | ● | ● | * | 15.000 | 20.000 |
| SF1/2DT (B) (2.8) | 0XXXX04005 | 0,30 | 0,50-1,00 | A | 0,70 | 0,80 | ● | ● | * | 15.000 | 20.000 |
| SF1/2DT TERS (A) (2.8) | 0XXXX04040 | 0,30 | 0,50-1,00 | B | 0,40 | 0,50 | ● | ● | * | 15.000 | - |
| SF1/2DT TERS (B) (2.8) | 0XXXX04053 | 0,30 | 0,50-1,00 | B | 0,70 | 0,80 | ● | ● | * | 15.000 | - |
| SF1/2DT (A) NKTL (2.8) | 0XXXX04139 | 0,30 | 0,50-1,00 | C | 0,40 | 0,50 | ● | ● | * | 15.000 | - |
| SF1/2DT (B) NKTL (2.8) | 0XXXX04140 | 0,30 | 0,50-1,00 | C | 0,70 | 0,80 | ● | ● | * | 15.000 | - |
| SF1/2DT-V2 (A) (2.8) | 0XXXX04427 | 0,30 | 0,50-1,00 | D | 0,40 | 0,50 | ● | ● | * | 8.000 | - |
| SF1/2DT-V2 (B) (2.8) | 0XXXX04428 | 0,30 | 0,50-1,00 | D | 0,70 | 0,80 | ● | ● | * | 8.000 | - |
| SF1/2DBT-V2 (A) (2.8) | 0XXXX04429 | 0,30 | 0,50-1,50 | D | 0,40 | 0,50 | ● | ● | * | 8.000 | - |
| SF1/2DBT-V2 (B) (2.8) | 0XXXX04430 | 0,30 | 0,50-1,50 | D | 0,70 | 0,80 | ● | ● | * | 8.000 | - |

- Standart Ürün / *Standard Part*
- * Talep Üzerine / *Available on request*

| Kaplama / <i>Plating</i> | | |
|--------------------------|----|----|
| Sn | Ni | Ag |
| ✓ | ✓ | ✓ |

Düz Tip Dişi Terminaller / *Receptacles*



4.8 mm

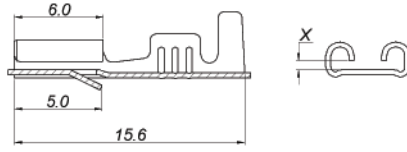
| Ürün Adı <i>Product Name</i> | Ürün Kodu <i>Product Code</i> | Malzeme Kalınlığı (mm) <i>Material Thickness (mm)</i> | Kablo Kesiti (mm ²) <i>Wire Size (mm²)</i> | Form | X | TAB | Malzeme / <i>Material</i> | | | Adet / <i>SPQ</i> | |
|---------------------------------|----------------------------------|--|--|------|------|------|---------------------------|------|----|---------------------|----------------------|
| | | | | | | | CuZn | CuSn | DC | Rulo / <i>Chain</i> | Dökme / <i>Loose</i> |
| SF1DKM MINI (A)-V (4.8) | 0XXXX04406 | 0,30 | 0,22-0,50 | - | 0,40 | 0,50 | ● | * | * | 10.000 | 10.000 |
| SF1DKM MINI (C)-V (4.8) | 0XXXX04402 | 0,30 | 0,22-0,50 | - | 0,55 | 0,80 | ● | * | * | 10.000 | 10.000 |
| SF1DK MINI (A)-V (4.8) | 0XXXX04407 | 0,30 | 0,30-0,80 | - | 0,40 | 0,50 | ● | * | * | 10.000 | 10.000 |
| SF1DK MINI (C)-V (4.8) | 0XXXX04410 | 0,30 | 0,30-0,80 | - | 0,55 | 0,80 | ● | * | * | 10.000 | 10.000 |
| SF1D MINI (A)-V (4.8) | 0XXXX04161 | 0,32 | 0,50-1,00 | - | 0,40 | 0,50 | ● | * | * | 10.000 | 10.000 |
| SF1D MINI (C)-V (4.8) | 0XXXX04175 | 0,32 | 0,50-1,00 | - | 0,55 | 0,80 | ● | * | * | 10.000 | 10.000 |
| SF1D MINI (A) (4.8) | 0XXXX04014 | 0,35 | 0,50-1,00 | - | 0,40 | 0,50 | ● | * | ● | 10.000 | 10.000 |
| SF1D MINI (B) (4.8) | 0XXXX04015 | 0,35 | 0,50-1,00 | - | 0,70 | 0,80 | ● | * | ● | 10.000 | 10.000 |
| SF1DB MINI (A) (4.8) | 0XXXX04020 | 0,35 | 1,00-2,50 | - | 0,40 | 0,50 | ● | * | ● | 10.000 | 10.000 |
| SF1DB MINI (B) (4.8) | 0XXXX04021 | 0,35 | 1,00-2,50 | - | 0,70 | 0,80 | ● | * | ● | 10.000 | 10.000 |

| Kullanıldığı Konnektörler / <i>Used with insulation housing</i> | Sayfa / <i>Page</i> |
|---|----------------------|
| 4.8 R Tipi Konnektör / <i>4.8 R Type Housing</i> | 0XXXX41011-0 13-5 |

| Kaplama / <i>Plating</i> | | |
|--------------------------|----|----|
| Sn | Ni | Ag |
| ✓ | ✓ | ✓ |

- Standart Ürün / *Standard Part*
- * Talep Üzerine / *Available on request*

Düz Tip Dişi Terminaller / *Receptacles*

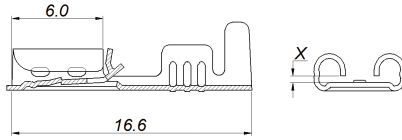


4.8 mm

| Ürün Adı Product Name | Ürün Kodu Product Code | Malzeme Kalınlığı (mm) Material Thickness (mm) | Kablo Kesiti (mm ²) Wire Size (mm ²) | Form | X | TAB | Malzeme / Material | | | Adet / SPQ | |
|--------------------------|---------------------------|---|---|------|------|------|--------------------|------|----|--------------|---------------|
| | | | | | | | CuZn | CuSn | DC | Rulo / Chain | Dökme / Loose |
| SF2D MINI (A) (4.8) | 0XXXX04017 | 0,35 | 0,50-1,00 | - | 0,40 | 0,50 | ● | * | * | 10.000 | 10.000 |
| SF2D MINI (B) (4.8) | 0XXXX04041 | 0,35 | 0,50-1,00 | - | 0,70 | 0,80 | ● | * | * | 10.000 | 10.000 |
| SF2DB MINI (A) (4.8) | 0XXXX04245 | 0,35 | 1,00-2,50 | - | 0,40 | 0,50 | ● | * | * | 10.000 | 10.000 |
| SF2DB MINI (B) (4.8) | 0XXXX04246 | 0,35 | 1,00-2,50 | - | 0,70 | 0,80 | ● | * | * | 10.000 | 10.000 |

- Standart Ürün / Standard Part
- * Talep Üzerine / Available on request

| Kaplama / Plating | | |
|-------------------|----|----|
| Sn | Ni | Ag |
| ✓ | ✓ | ✓ |



4.8 mm

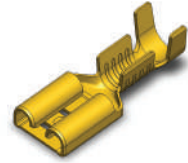
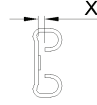
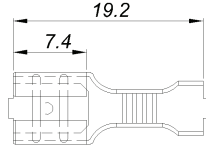
| Ürün Adı Product Name | Ürün Kodu Product Code | Malzeme Kalınlığı (mm) Material Thickness (mm) | Kablo Kesiti (mm ²) Wire Size (mm ²) | Form | X | TAB | Malzeme / Material | | | Adet / SPQ | |
|--------------------------|---------------------------|---|---|------|------|------|--------------------|------|----|--------------|---------------|
| | | | | | | | CuZn | CuSn | DC | Rulo / Chain | Dökme / Loose |
| SF23DK MINI (A) (4.8) | 0XXXX04083 | 0,35 | 0,15-0,35 | - | 0,40 | 0,50 | ● | * | - | 6.000 | - |
| SF23DK MINI (B) (4.8) | 0XXXX04365 | 0,35 | 0,15-0,35 | - | 0,70 | 0,80 | ● | * | - | 6.000 | - |
| SF23DM MINI (A) (4.8) | 0XXXX04616 | 0,35 | 0,35-0,50 | - | 0,40 | 0,50 | ● | * | - | 6.000 | - |
| SF23D MINI (A) (4.8) | 0XXXX04045 | 0,35 | 0,50-1,00 | - | 0,40 | 0,50 | ● | * | - | 6.000 | - |
| SF23D MINI (B) (4.8) | 0XXXX04043 | 0,35 | 0,50-1,00 | - | 0,70 | 0,80 | ● | * | - | 6.000 | - |
| SF23DB MINI (A) (4.8) | 0XXXX04095 | 0,35 | 1,00-2,50 | - | 0,40 | 0,50 | ● | * | - | 6.000 | - |
| SF23DB MINI (B) (4.8) | 0XXXX04096 | 0,35 | 1,00-2,50 | - | 0,70 | 0,80 | ● | * | - | 6.000 | - |

| Kullanıldığı Konnektörler / Used with insulation housing | Sayfa / Page |
|--|-------------------|
| SF23D Mini Konnektör / SF23D Mini Housing | 0XXXX41048-0 13-5 |

| Kaplama / Plating | | |
|-------------------|----|----|
| Sn | Ni | Ag |
| ✓ | ✓ | ✓ |

- Standart Ürün / Standard Part
- * Talep Üzerine / Available on request

Düz Tip Dişi Terminaller / *Receptacles*



6.3 mm

| Ürün Adı <i>Product Name</i> | Ürün Kodu <i>Product Code</i> | Malzeme Kalınlığı (mm) <i>Material Thickness (mm)</i> | Kablo Kesiti (mm ²) <i>Wire Size (mm²)</i> | Form | X | TAB | Malzeme / <i>Material</i> | | | Adet / <i>SPQ</i> | |
|---------------------------------|----------------------------------|--|--|------|------|------|---------------------------|------|----|---------------------|----------------------|
| | | | | | | | CuZn | CuSn | DC | Rulo / <i>Chain</i> | Dökme / <i>Loose</i> |
| SF1DKM (6.3) | 0XXXX04182 | 0,40 | 0,25-0,50 | - | 0,60 | 0,80 | ● | ● | ● | 6.000 | 6.000 |
| SF1DK (6.3) | 0XXXX04009 | 0,40 | 0,50-1,00 | - | 0,60 | 0,80 | ● | ● | ● | 6.000 | 6.000 |
| SF1DM (6.3) | 0XXXX04434 | 0,40 | 0,80-2,00 | - | 0,60 | 0,80 | ● | ● | ● | 6.000 | 6.000 |
| SF1D (6.3) | 0XXXX04006 | 0,40 | 1,00-2,50 | - | 0,60 | 0,80 | ● | ● | ● | 6.000 | 6.000 |
| SF1DBK (6.3) | 0XXXX04228 | 0,40 | 2,50-4,00 | - | 0,60 | 0,80 | ● | ● | ● | 5.000 | 5.000 |
| SF1DB (6.3) | 0XXXX04010 | 0,40 | 4,00-6,00 | - | 0,60 | 0,80 | ● | ● | ● | 5.000 | 5.000 |

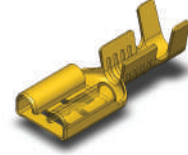
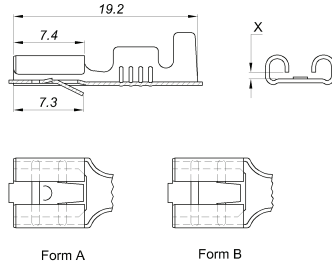
| Kullanıldığı Konnektörler / <i>Used with insulation housing</i> | Sayfa / <i>Page</i> |
|---|---------------------|
| 6.3 R3 Tipi Konnektör / <i>6.3 R3 Type Housing</i> | 0XXXX41090-0 13-6 |
| 6.3 TS 4'lü Konnektör / <i>6.3 TS 4 Housing (4 Poles)</i> | 0XXXX41015-0 13-7 |
| SF1D Kılıf (PE-1 20) / <i>SF1D Sleeve</i> | 0XXXX42002-0 14-1 |
| SF1D Kılıf (PA66) / <i>SF1D Sleeve</i> | 0XXXX42016-0 14-1 |

| Kaplama / <i>Plating</i> | | |
|--------------------------|----|----|
| Sn | Ni | Ag |
| ✓ | ✓ | ✓ |

● Standart Ürün / *Standard Part*

* Talep Üzerine / *Available on request*

Düz Tip Dişi Terminaller / *Receptacles*



6.3 mm

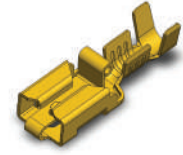
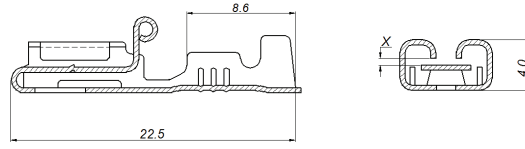
| Ürün Adı <i>Product Name</i> | Ürün Kodu <i>Product Code</i> | Malzeme Kalınlığı (mm) <i>Material Thickness (mm)</i> | Kablo Kesiti (mm ²) <i>Wire Size (mm²)</i> | Form | X | TAB | Malzeme / <i>Material</i> | | | Adet / <i>SPQ</i> | |
|---------------------------------|----------------------------------|--|--|------|------|------|---------------------------|------|----|---------------------|----------------------|
| | | | | | | | CuZn | CuSn | DC | Rulo / <i>Chain</i> | Dökme / <i>Loose</i> |
| SF2DK (6.3) | 0XXXX04024 | 0,35 | 0,50-1,00 | A | 0,65 | 0,80 | ● | ● | - | 5.000 | 6.000 |
| SF2DK NKTZ (6.3) | 0XXXX04442 | 0,35 | 0,50-1,00 | B | 0,65 | 0,80 | ● | ● | - | 5.000 | 6.000 |
| SF2D (6.3) | 0XXXX04022 | 0,35 | 1,00-2,50 | A | 0,65 | 0,80 | ● | ● | - | 5.000 | 6.000 |
| SF2D NKTZ (6.3) | 0XXXX04443 | 0,35 | 1,00-2,50 | B | 0,65 | 0,80 | ● | ● | - | 5.000 | 6.000 |
| SF2DBK (6.3) | 0XXXX04230 | 0,40 | 2,50-4,00 | A | 0,60 | 0,80 | ● | ● | - | 4.000 | 5.000 |
| SF2DBK NKTZ (6.3) | 0XXXX04631 | 0,40 | 2,50-4,00 | B | 0,60 | 0,80 | ● | ● | - | 4.000 | 5.000 |
| SF2DB (6.3) | 0XXXX04023 | 0,40 | 4,00-6,00 | A | 0,65 | 0,80 | ● | ● | - | 4.000 | 5.000 |
| SF2DB NKTZ (6.3) | 0XXXX04444 | 0,40 | 4,00-6,00 | B | 0,65 | 0,80 | ● | ● | - | 4.000 | 5.000 |

| Kullanıldığı Konnektörler / <i>Used with insulation housing</i> | Sayfa / <i>Page</i> |
|---|---------------------|
| 101 Erkek Konnektör (1 Göz) / <i>101 Male Housing (1 Pole)</i> | 0XXXX40001-0 13-1 |
| 201 Erkek Konnektör (2 Göz) / <i>201 Male Housing (2 Poles)</i> | 0XXXX40002-0 13-1 |
| 201-T Erkek Konnektör (2 Göz) / <i>201-T Male Housing (2 Poles)</i> | 0XXXX40038-0 13-2 |
| 301 Erkek Konnektör (3 Göz) / <i>301 Male Housing (3 Poles)</i> | 0XXXX40003-0 13-2 |
| 401 Erkek Konnektör (4 Göz) / <i>401 Male Housing (4 Poles)</i> | 0XXXX40004-0 13-3 |
| 601 Erkek Konnektör (6 Göz) / <i>601 Male Housing (6 Poles)</i> | 0XXXX40005-0 13-3 |
| 801 Erkek Konnektör (8 Göz) / <i>801 Male Housing (8 Poles)</i> | 8XXXX40007-0 13-4 |

| Kaplama / <i>Plating</i> | | |
|--------------------------|----|----|
| Sn | Ni | Ag |
| ✓ | ✓ | ✓ |

- Standart Ürün / *Standard Part*
- * Talep Üzerine / *Available on request*

Düz Tip Dişi Terminaller / *Receptacles*



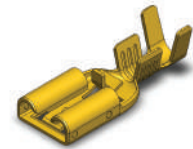
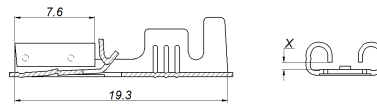
6.3 mm

| Ürün Adı Product Name | Ürün Kodu Product Code | Malzeme Kalınlığı (mm) Material Thickness (mm) | Kablo Kesiti (mm ²) Wire Size (mm ²) | Form | X | TAB | Malzeme / Material | | | Adet / SPQ | |
|--------------------------|---------------------------|---|---|------|------|------|--------------------|------|----|--------------|---------------|
| | | | | | | | CuZn | CuSn | DC | Rulo / Chain | Dökme / Loose |
| SF21DKM (6.3) | 0XXXX04578 | 0,40 | 0,35-0,50 | - | 0,55 | 0,80 | ● | ● | - | 1.500 | - |
| SF21DK (6.3) | 0XXXX04054 | 0,40 | 0,50-1,00 | - | 0,55 | 0,80 | ● | ● | - | 1.500 | - |
| SF21D (6.3) | 0XXXX04032 | 0,40 | 1,00-2,50 | - | 0,55 | 0,80 | ● | ● | - | 1.500 | - |
| SF21DB (6.3) | 0XXXX04050 | 0,40 | 2,50-6,00 | - | 0,55 | 0,80 | ● | ● | - | 1.250 | - |

| Kullanıldığı Konnektörler / Used with insulation housing | Sayfa / Page |
|---|-------------------|
| SF21D Tekli Konnektör / SF21D Housing | 0XXXX40008-0 13-6 |
| SF21D 5'li Erkek Konnektör / SF21D Male Housing (5 Poles) | 0XXXX40009-0 13-6 |

| Kaplama / Plating | | |
|-------------------|----|----|
| Sn | Ni | Ag |
| ✓ | ✓ | ✓ |

- Standart Ürün / Standard Part
- * Talep Üzerine / Available on request



6.3 mm

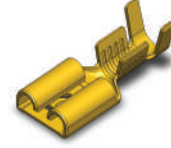
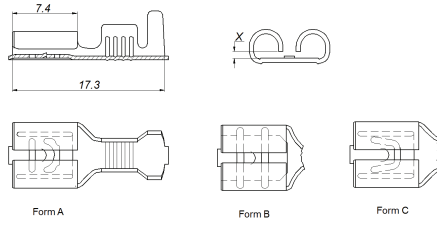
| Ürün Adı Product Name | Ürün Kodu Product Code | Malzeme Kalınlığı (mm) Material Thickness (mm) | Kablo Kesiti (mm ²) Wire Size (mm ²) | Form | X | TAB | Malzeme / Material | | | Adet / SPQ | |
|--------------------------|---------------------------|---|---|------|------|------|--------------------|------|----|--------------|---------------|
| | | | | | | | CuZn | CuSn | DC | Rulo / Chain | Dökme / Loose |
| SF23DKM (6.3) | 0XXXX04277 | 0,40 | 0,20-0,50 | - | 0,65 | 0,80 | ● | * | - | 5.000 | - |
| SF23DK (6.3) | 0XXXX04035 | 0,40 | 0,50-1,00 | - | 0,65 | 0,80 | ● | * | - | 5.000 | - |
| SF23D (6.3) | 0XXXX04033 | 0,40 | 1,00-2,50 | - | 0,65 | 0,80 | ● | * | - | 5.000 | - |
| SF23DB (6.3) | 0XXXX04034 | 0,40 | 2,50-4,00 | - | 0,65 | 0,80 | ● | * | - | 5.000 | - |

| Kullanıldığı Konnektörler / Used with insulation housing | Sayfa / Page |
|--|-------------------|
| SF23D Konnektör / SF23D Housing | 0XXXX41017-0 13-7 |

| Kaplama / Plating | | |
|-------------------|----|----|
| Sn | Ni | Ag |
| ✓ | ✓ | ✓ |

- Standart Ürün / Standard Part
- * Talep Üzerine / Available on request

Düz Tip Dişi Terminaller / *Receptacles*



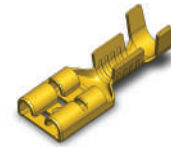
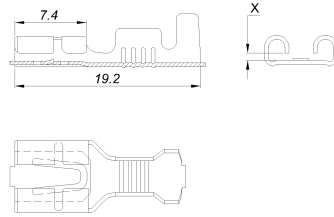
6.3 mm

| Ürün Adı Product Name | Ürün Kodu Product Code | Malzeme Kalınlığı (mm) Material Thickness (mm) | Kablo Kesiti (mm ²) Wire Size (mm ²) | Form | X | TAB | Malzeme / Material | | | Adet / SPQ | |
|--------------------------|---------------------------|---|---|------|------|------|--------------------|------|----|--------------|---------------|
| | | | | | | | CuZn | CuSn | DC | Rulo / Chain | Dökme / Loose |
| SF31DKM (E) (6.3) | 0XXXX04167 | 0,40 | 0,35-0,50 | B | 0,60 | 0,80 | ● | ● | ● | 6.000 | 6.000 |
| SF31DK (E) (6.3) | 0XXXX04131 | 0,40 | 0,50-1,00 | A | 0,60 | 0,80 | ● | ● | ● | 5.000 | 6.000 |
| SF31D (E) (6.3) | 0XXXX04132 | 0,40 | 1,00-2,50 | A | 0,60 | 0,80 | ● | ● | ● | 5.000 | 6.000 |
| SF31DK-U (C) (6.3) | 0XXXX04470 | 0,40 | 0,50-1,00 | C | 0,55 | 0,80 | ● | ● | ● | 5.000 | 6.000 |
| SF31D-U (C) (6.3) | 0XXXX04288 | 0,40 | 1,00-2,50 | C | 0,55 | 0,80 | ● | ● | ● | 5.000 | 6.000 |
| SF31DB (6.3) | 0XXXX04133 | 0,40 | 2,50-6,00 | A | 0,55 | 0,80 | ● | ● | ● | 5.000 | 6.000 |

| Kullanıldığı Konnektörler / Used with insulation housing | Sayfa / Page |
|--|-------------------|
| 6.3 R3 Tipi Konnektör / 6.3 R3 Type Housing | 0XXXX41090-0 13-6 |
| 6.3 TS 4'lü Konnektör / 6.3 TS 4 Housing (4 Poles) | 0XXXX41015-0 13-7 |
| SF1D Kılıf (PE-120) / SF1D Sleeve | 0XXXX42002-0 14-1 |
| SF1D Kılıf (PA66) / SF1D Sleeve | 0XXXX42016-0 14-1 |

| Kaplama / Plating | | |
|-------------------|----|----|
| Sn | Ni | Ag |
| ✓ | ✓ | ✓ |

- Standart Ürün / Standard Part
- * Talep Üzerine / Available on request



6.3 mm

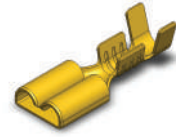
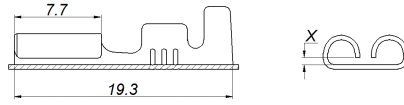
| Ürün Adı Product Name | Ürün Kodu Product Code | Malzeme Kalınlığı (mm) Material Thickness (mm) | Kablo Kesiti (mm ²) Wire Size (mm ²) | Form | X | TAB | Malzeme / Material | | | Adet / SPQ | |
|--------------------------|---------------------------|---|---|------|------|------|--------------------|------|----|--------------|---------------|
| | | | | | | | CuZn | CuSn | DC | Rulo / Chain | Dökme / Loose |
| SF33DK-U (6.3) | 0XXXX04304 | 0,40 | 0,50-1,00 | - | 0,60 | 0,80 | ● | ● | * | 6.000 | 6.000 |

| Kullanıldığı Konnektörler / Used with insulation housing | Sayfa / Page |
|--|-------------------|
| 6.3 R3 Tipi Konnektör / 6.3 R3 Type Housing | 0XXXX41090-0 13-6 |
| 6.3 TS 4'lü Konnektör / 6.3 TS 4 Housing (4 Poles) | 0XXXX41015-0 13-7 |
| SF1D Kılıf (PE-120) / SF1D Sleeve | 0XXXX42002-0 14-1 |
| SF1D Kılıf (PA66) / SF1D Sleeve | 0XXXX42016-0 14-1 |

| Kaplama / Plating | | |
|-------------------|----|----|
| Sn | Ni | Ag |
| ✓ | ✓ | ✓ |

- Standart Ürün / Standard Part
- * Talep Üzerine / Available on request

Düz Tip Dişi Terminaller / *Receptacles*

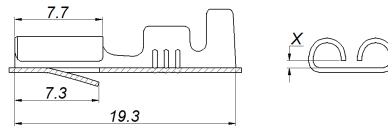


6.3 mm

| Ürün Adı Product Name | Ürün Kodu Product Code | Malzeme Kalınlığı (mm) Material Thickness (mm) | Kablo Kesiti (mm ²) Wire Size (mm ²) | Form | X | TAB | Malzeme / Material | | | Adet / SPQ | |
|--------------------------|---------------------------|---|---|------|------|------|--------------------|------|----|--------------|---------------|
| | | | | | | | CuZn | CuSn | DC | Rulo / Chain | Dökme / Loose |
| SF38D (6.3) | 0XXXX04236 | 0,35 | 1,00-2,50 | - | 0,65 | 0,80 | ● | ✳ | - | 5.000 | - |
| SF38D (A) (6.3) | 0XXXX04300 | 0,35 | 1,00-2,50 | - | 0,40 | 0,50 | ● | ✳ | - | 5.000 | - |
| SF38DKM (6.3) | 0XXXX04259 | 0,35 | 0,35-0,50 | - | 0,65 | 0,80 | ● | ✳ | - | 5.000 | - |

- Standart Ürün / Standard Part
- ✳ Talep Üzerine / Available on request

| Kaplama / Plating | | |
|-------------------|----|----|
| Sn | Ni | Ag |
| ✓ | ✓ | ✓ |



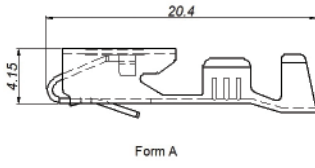
6.3 mm

| Ürün Adı Product Name | Ürün Kodu Product Code | Malzeme Kalınlığı (mm) Material Thickness (mm) | Kablo Kesiti (mm ²) Wire Size (mm ²) | Form | X | TAB | Malzeme / Material | | | Adet / SPQ | |
|--------------------------|---------------------------|---|---|------|------|------|--------------------|------|----|--------------|---------------|
| | | | | | | | CuZn | CuSn | DC | Rulo / Chain | Dökme / Loose |
| SF38DT (6.3) | 0XXXX04283 | 0,35 | 1,00-2,50 | - | 0,65 | 0,80 | ● | ✳ | - | 5.000 | - |
| SF38DT (A) (6.3) | 0XXXX04306 | 0,35 | 1,00-2,50 | - | 0,40 | 0,50 | ● | ✳ | - | 5.000 | - |
| SF38DTKM (6.3) | 0XXXX04289 | 0,35 | 0,35-0,50 | - | 0,65 | 0,80 | ● | ✳ | - | 5.000 | - |

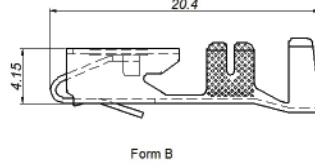
- Standart Ürün / Standard Part
- ✳ Talep Üzerine / Available on request

| Kaplama / Plating | | |
|-------------------|----|----|
| Sn | Ni | Ag |
| ✓ | ✓ | ✓ |

Düz Tip Erkek - Dişi Terminaller / *Piggyback*



Form A



Form B

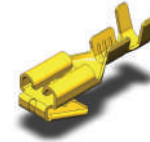
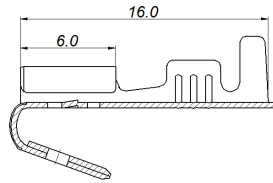


6.3 mm

| Ürün Adı Product Name | Ürün Kodu Product Code | Malzeme Kalınlığı (mm) Material Thickness (mm) | Kablo Kesiti (mm ²) Wire Size (mm ²) | Form | X | TAB | Malzeme / Material | | | Adet / SPQ | |
|--------------------------|---------------------------|---|---|------|---|------|--------------------|------|----|--------------|---------------|
| | | | | | | | CuZn | CuSn | DC | Rulo / Chain | Dökme / Loose |
| SF49D (6.3) | 0XXXX04567 | 0,40 | 1,00-2,00 | A | - | 0,80 | ● | * | - | 3.000 | - |
| SF49DB (6.3) | 0XXXX04568 | 0,40 | 2,50-4,00 | B | - | 0,80 | ● | * | - | 2.500 | - |

- Standart Ürün / Standard Part
- * Talep Üzerine / Available on request

| Kaplama / Plating | | |
|-------------------|----|----|
| Sn | Ni | Ag |
| ✓ | ✓ | ✓ |



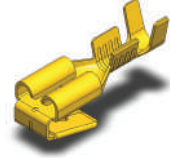
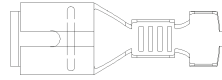
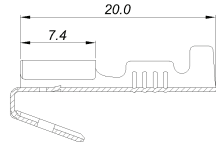
4.8 mm

| Ürün Adı Product Name | Ürün Kodu Product Code | Malzeme Kalınlığı (mm) Material Thickness (mm) | Kablo Kesiti (mm ²) Wire Size (mm ²) | Form | X | TAB | Malzeme / Material | | | Adet / SPQ | |
|--------------------------|---------------------------|---|---|------|------|------|--------------------|------|----|--------------|---------------|
| | | | | | | | CuZn | CuSn | DC | Rulo / Chain | Dökme / Loose |
| SF1DE MINI (A) (4.8) | 0XXXX04253 | 0,37 | 0,50-1,00 | - | 0,40 | 0,50 | ● | * | - | 2.000 | - |
| SF1DE MINI (B) (4.8) | 0XXXX04252 | 0,37 | 0,50-1,00 | - | 0,70 | 0,80 | ● | * | - | 2.000 | - |
| SF1DEB MINI (A) (4.8) | 0XXXX04194 | 0,37 | 1,00-2,50 | - | 0,40 | 0,50 | ● | * | - | 2.000 | - |
| SF1DEB MINI (B) (4.8) | 0XXXX04255 | 0,37 | 1,00-2,50 | - | 0,70 | 0,80 | ● | * | - | 2.000 | - |

- Standart Ürün / Standard Part
- * Talep Üzerine / Available on request

| Kaplama / Plating | | |
|-------------------|----|----|
| Sn | Ni | Ag |
| ✓ | ✓ | ✓ |

Düz Tip Erkek - Dişi Terminaller / *Piggyback*



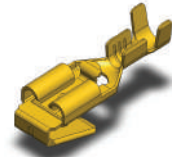
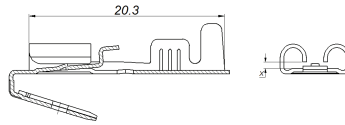
6.3 mm

| Ürün Adı Product Name | Ürün Kodu Product Code | Malzeme Kalınlığı (mm) Material Thickness (mm) | Kablo Kesiti (mm ²) Wire Size (mm ²) | Form | X | TAB | Malzeme / Material | | | Adet / SPQ | |
|--------------------------|---------------------------|---|---|------|------|------|--------------------|------|----|--------------|---------------|
| | | | | | | | CuZn | CuSn | DC | Rulo / Chain | Dökme / Loose |
| SF1DEK TEK (6.3) | 0XXXX04124 | 0,38 | 0,50-1,00 | - | 0,60 | 0,80 | ● | * | ● | 1.500 | 1.000 |
| SF1DE TEK (6.3) | 0XXXX04059 | 0,38 | 1,00-2,50 | - | 0,60 | 0,80 | ● | * | ● | 1.500 | 1.000 |

● Standart Ürün / Standard Part

* Talep Üzerine / Available on request

| Kaplama / Plating | | |
|-------------------|----|----|
| Sn | Ni | Ag |
| ✓ | ✓ | ✓ |



6.3 mm

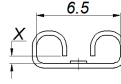
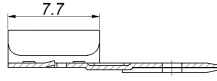
| Ürün Adı Product Name | Ürün Kodu Product Code | Malzeme Kalınlığı (mm) Material Thickness (mm) | Kablo Kesiti (mm ²) Wire Size (mm ²) | Form | X | TAB | Malzeme / Material | | | Adet / SPQ | |
|--------------------------|---------------------------|---|---|------|------|------|--------------------|------|----|--------------|---------------|
| | | | | | | | CuZn | CuSn | DC | Rulo / Chain | Dökme / Loose |
| SF1DEK KLT (6.3) | 0XXXX04579 | 0,38 | 0,50-0,75 | - | 0,65 | 0,80 | ● | * | * | 1.500 | 1.000 |
| SF1DE KLT (6.3) | 0XXXX04432 | 0,38 | 1,00-1,50 | - | 0,65 | 0,80 | ● | * | * | 1.500 | 1.000 |

● Standart Ürün / Standard Part

* Talep Üzerine / Available on request

| Kaplama / Plating | | |
|-------------------|----|----|
| Sn | Ni | Ag |
| ✓ | ✓ | ✓ |

Düz Tip Erkek - Dişi Terminaller / *Piggyback*

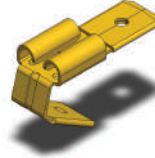
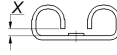
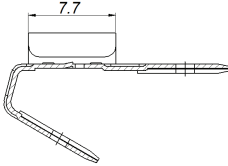


6.3 mm

| Ürün Adı Product Name | Ürün Kodu Product Code | Malzeme Kalınlığı (mm) Material Thickness (mm) | Kablo Kesiti (mm ²) Wire Size (mm ²) | Form | X | TAB | Malzeme / Material | | | Adet / SPQ | |
|--------------------------|---------------------------|---|---|------|------|------|--------------------|------|----|--------------|---------------|
| | | | | | | | CuZn | CuSn | DC | Rulo / Chain | Dökme / Loose |
| SF1ED (6.3) | 0XXXX04265 | 0,37 | - | - | 0,60 | 0,80 | ● | * | * | - | 6.000 |

- Standart Ürün / Standard Part
- * Talep Üzerine / Available on request

| Kaplama / Plating | | |
|-------------------|----|----|
| Sn | Ni | Ag |
| ✓ | ✓ | ✓ |



6.3 mm

| Ürün Adı Product Name | Ürün Kodu Product Code | Malzeme Kalınlığı (mm) Material Thickness (mm) | Kablo Kesiti (mm ²) Wire Size (mm ²) | Form | X | TAB | Malzeme / Material | | | Adet / SPQ | |
|--------------------------|---------------------------|---|---|------|------|------|--------------------|------|----|--------------|---------------|
| | | | | | | | CuZn | CuSn | DC | Rulo / Chain | Dökme / Loose |
| SF1EDE (6.3) | 0XXXX04264 | 0,37 | - | - | 0,60 | 0,80 | ● | * | * | - | 4.000 |

- Standart Ürün / Standard Part
- * Talep Üzerine / Available on request

| Kaplama / Plating | | |
|-------------------|----|----|
| Sn | Ni | Ag |
| ✓ | ✓ | ✓ |