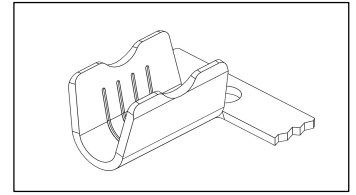


Product Information

Product Type:	Straight
Series:	End Splices 7 mm (.276) Series
Product Name:	SK3
Product Code:	0XXXX10001
Wire Size:	1.50-5.00 mm ²



Product Codes

Product Code	Product Name	Approvals	Material	Plating	Maximum Temperature (°C)	Max. Contact Resistance with Min. Wire Size (mΩ)
0100110001	SK3 RP	-	Brass	-	110 °C	-
0101110001	SK3 RPK	-	Brass	Post-Tin	120 °C	-

Insertion / Withdrawal Forces

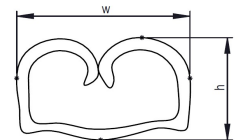
1. Insertion (Max.):	-
1. Withdrawal (Max.):	-
1. Withdrawal (Min.):	-
6. Withdrawal (Min.):	-

Crimp Pull-Out Force

Wire Size	1. Pull Out Force
0.75 + 0.75 mm ²	84 + 84 N Min.
0.75 + 2x0.75 mm ²	84 + 84 N Min.
0.50 + 0.75 + 2x0.75 mm ²	56 + 84 N Min.
1.50 + 1.50 mm ²	150 + 150 N Min.
2x0.75 + 2x0.75 mm ²	84 + 84 N Min.
3x0.75 + 2x0.75 mm ²	84 + 84 N Min.
1.50 + 2x1.50 mm ²	150 + 150 N Min.
3x0.75 + 3x0.75 mm ²	84 + 84 N Min.
0.50 + 1.50 + 2x1.50 mm ²	56 + 150 N Min.
2.50 + 2.50 mm ²	230 + 230 N Min.

Crimp Data*

Wire Size	Height (h) (mm)		Width (w) (mm)	
	Wire	Insulator	Wire	Insulator
0.75 + 0.75 mm ²	1.95 ±0.05	-	4.04 ±0.10	-
0.75 + 2x0.75 mm ²	2.10 ±0.05	-	4.08 ±0.10	-
0.50 + 0.75 + 2x0.75 mm ²	2.18 ±0.05	-	4.06 ±0.10	-
1.50 + 1.50 mm ²	2.20 ±0.05	-	4.08 ±0.10	-
2x0.75 + 2x0.75 mm ²	2.20 ±0.05	-	4.08 ±0.10	-
3x0.75 + 2x0.75 mm ²	2.30 ±0.05	-	4.08 ±0.10	-
1.50 + 2x1.50 mm ²	2.50 ±0.05	-	4.09 ±0.10	-
3x0.75 + 3x0.75 mm ²	2.40 ±0.05	-	4.10 ±0.10	-
0.50 + 1.50 + 2x1.50 mm ²	2.53 ±0.05	-	4.11 ±0.10	-
2.50 + 2.50 mm ²	2.55 ±0.05	-	4.11 ±0.10	-



*These values are valid with Hatko applicators and crimpers.

F05.067 REV.0